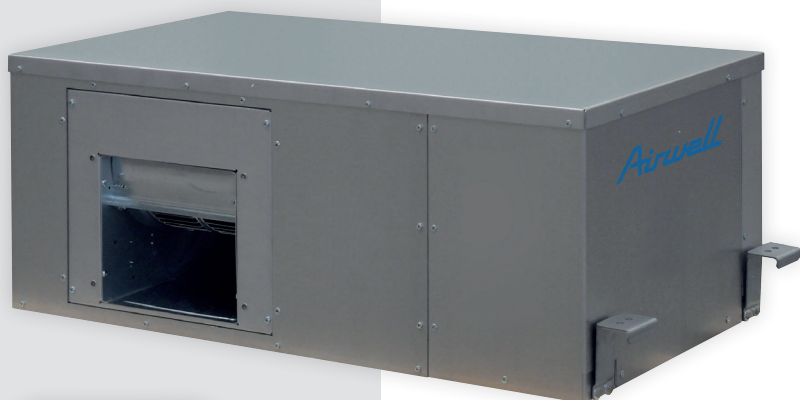




Fixed speed  
Cooling and heating

# DFO 5 TO 17

## WATER LOOP HEAT PUMP



### + PRODUCTS

- Remote control included
- Solution without outdoor unit
- Monobloc
- Compact design
- Wide power range
- Thermostat included

### FEATURES

#### TECHNOLOGY:



ELECTRONIC EXPANSION VALVE

#### THE «SUSTAINABLE DEVELOPMENT»

→ Reduced water consumption thanks to the integrated modulating valve

→ High efficiency

#### THE «USER»

→ Fire classification: M0 (ERP compatible)

#### THE «INSTALLER»

→ Alarm output for fault reporting

#### THE «TECHNOLOGY»

→ Integrated temperature sensors for optimised consumption

### DFO 5 À 17 TECHNICAL DATA

Indoor unit		AW-DF0005-H11	AW-DF0009-H11	AW-DF0017-H11
Part number		70G091075	70G091076	70G091077
Phase		Single phase	Single phase	Single phase
<b>COOLING</b>				
Rated power <sup>(1)</sup>	kW	2.26	3.16	4.16
Sensitive power	kW	1.91	2.75	3.50
Total input power	kW	0.54	0.74	0.92
EER		4.22	4.28	4.51
<b>HEATING - AIR TO 20°C - WATER TO 20°C</b>				
Rated power <sup>(2)</sup>	kW	2.76	3.85	4.92
Total input power	kW	0.55	0.77	1.06
COP		4.99	4.97	4.66
<b>HEATING - AIR TO 20°C - WATER TO 15°C</b>				
Rated power <sup>(3)</sup>	kW	2.46	3.33	4.42
Total input power	kW	0.55	0.73	1.02
COP		4.42	4.47	4.30
<b>INDOOR UNIT</b>				
Sound pressure level to 1 m	dB(A)	33	34	35
Number of compressors	nb	1	1	1
Compressor type		Rotary	Rotary	Rotary
Airflow	m <sup>3</sup> /h	533	612	800
Fan type		Centrifugal	Centrifugal	Centrifugal
Number of fans	nb	1	1	1
External static pressure	Pa	40 (0-80)	40 (0-80)	40 (0-80)
Water inlet flow <sup>(4)</sup>	l/s	0.13	0.18	0.24
Dimension (LxHxP)	mm	1034x361x513	1034x361x513	1034x361x513
Net weight/Weight with packaging	kg	71/81	74/84	82/92
<b>POWER SUPPLY</b>				
Phase/Voltage/Frequency		1P/230V/50Hz	1P/230V/50Hz	1P/230V/50Hz
<b>ERP DATA<sup>(5)</sup></b>				
SEER		3.75	3.90	4.18
SCOP		3.41	3.63	4.05
<b>PIPE LINE</b>				
Refrigerant/GWP		R410A/2088	R410A/2088	R410A/2088
Charge	kg	0.47	0.64	1.3

(1) Ambient air at 27°C DB/19°C WB. Exchanger water inlet/outlet temperature 30°C/35°C.

(2) Ambient air at 20°C DB. Exchanger water inlet temperature 20°C. The exchanger water outlet temperature is obtained as a function of the cooling water flow rate.

(3) Ambient air at 20°C DB. Exchanger water inlet temperature 15°C. The exchanger water outlet temperature is obtained as a function of the cooling water flow rate.

(4) Water flow rate calculated based on the cooling performance.

(5) Data calculated according to EN14825: 2016.

*Airwell*  
Just feel well



Fixed speed  
Cooling and heating

# DFO 21 TO 101

## WATER LOOP HEAT PUMP



### + PRODUCTS

- Remote control included
- Solution without outdoor unit
- Monobloc
- Compact design
- Wide power range

#### THE «SUSTAINABLE DEVELOPMENT»

- Reduced water consumption thanks to the integrated modulating valve
- High efficiency

#### THE «USER»

- Fire classification: M0 (ERP compatible)

#### THE «INSTALLER»

- Alarm output for fault reporting

#### THE «TECHNOLOGY»

- Integrated temperature sensors for optimised consumption

### DFO 21 À 101 TECHNICAL DATA

Indoor unit		AW- DFO021-H11	AW- DFO031-H11	AW- DFO051-H11	AW- DFO071-H13	AW- DFO101-H13
Part number		70G091078	70G091079	70G091081	70G091082	70G091084
Phase		Single phase	Single phase	Single phase	Three phase	Three phase
<b>COOLING</b>						
Rated power <sup>(1)</sup>	kW	4.56	8.08	10.60	16.90	25.00
Sensitive power	kW	3.74	6.44	8.84	13.90	20.00
Total input power	kW	1.30	2.07	3.04	4.15	5.85
EER		3.52	3.90	3.53	4.07	4.27
<b>HEATING</b>						
Rated power <sup>(2)</sup>	kW	7.55	10.30	14.40	23.10	33.20
Total input power	kW	1.75	2.39	3.35	5.23	7.21
COP		4.30	4.31	4.30	4.41	4.60
<b>INDOOR UNIT</b>						
Sound pressure level to 1 m	dB(A)	42	42	44	45	45
Number of compressors	nb	1	1	1	1	1
Compressor type		Rotary	Rotary	Rotary	Scroll	Scroll
Airflow	m <sup>3</sup> /h	1000	1500	2800	3800	4900
Fan type		Centrifugal	Centrifugal	Centrifugal	Centrifugal	Centrifugal
Number of fans	nb	1	1	1	1	1
External static pressure	Pa	250	270	290	310	220
Water inlet flow <sup>(4)</sup>	l/s	0.27	0.47	0.64	1.00	1.47
Dimension (LxHxP)	mm	962x490x692	962x490x692	1167x590x802	1167x590x802	1467x705x927
Net weight/Weight with packaging	kg	98/102	103/107	138/143	151/156	200/225
<b>POWER SUPPLY</b>						
Phase/Voltage/Frequency		1P/230V/50Hz	1P/230V/50Hz	1P/230V/50Hz	3P/400V/50Hz/N	3P/400V/50Hz/N
<b>ERP DATA<sup>(5)</sup></b>						
SEER		3.28	3.93	3.57	4.23	4.47
SCOP		3.81	3.82	3.81	3.91	4.08
<b>PIPE LINE</b>						
Refrigerant/GWP		R410A/2088				
Charge	kg	0.70	0.95	1.10	1.30	3.20

(1) Ambient air at 27°C DB/19°C WB. Exchanger water inlet/outlet temperature 30°C/35°C.

(2) Ambient air at 20°C DB. Exchanger water inlet temperature 20°C. The exchanger water outlet temperature is obtained as a function of the cooling water flow rate.

(3) The sound levels refer to units under nominal conditions with an average ventilation speed.

(4) Available static pressure with standard speed ventilation and clean filter.

(5) Pression statique disponible avec ventilation en vitesse standard et filtre propre.